

Sansin



江西三鑫医疗科技股份有限公司

JIANGXI SANXIN MEDTEC CO.,LTD.

地址: 江西南昌小蓝经济技术开发区富山大道999号

Add: No.999 Fushan Road, Xiaolan Economic Development

Zone 330200 Nanchang, Jiangxi P.R. China

电话 (Tel) : 86-791-85950275 Fax: 86-791-85988819

邮箱 (E-mail) : sales@sanxin-med.com

网址 (Web) : www.sanxin-med.com



DIALYSIS CENTER SOLUTION

1. Equipments

- 1-1. RO Water Room
- 1-2. CDS/Concentration Room
- 1-3. Hemodialysis Machine
- 1-4. Dialysis Powder Mixer

2. Hemodialysis Consumable

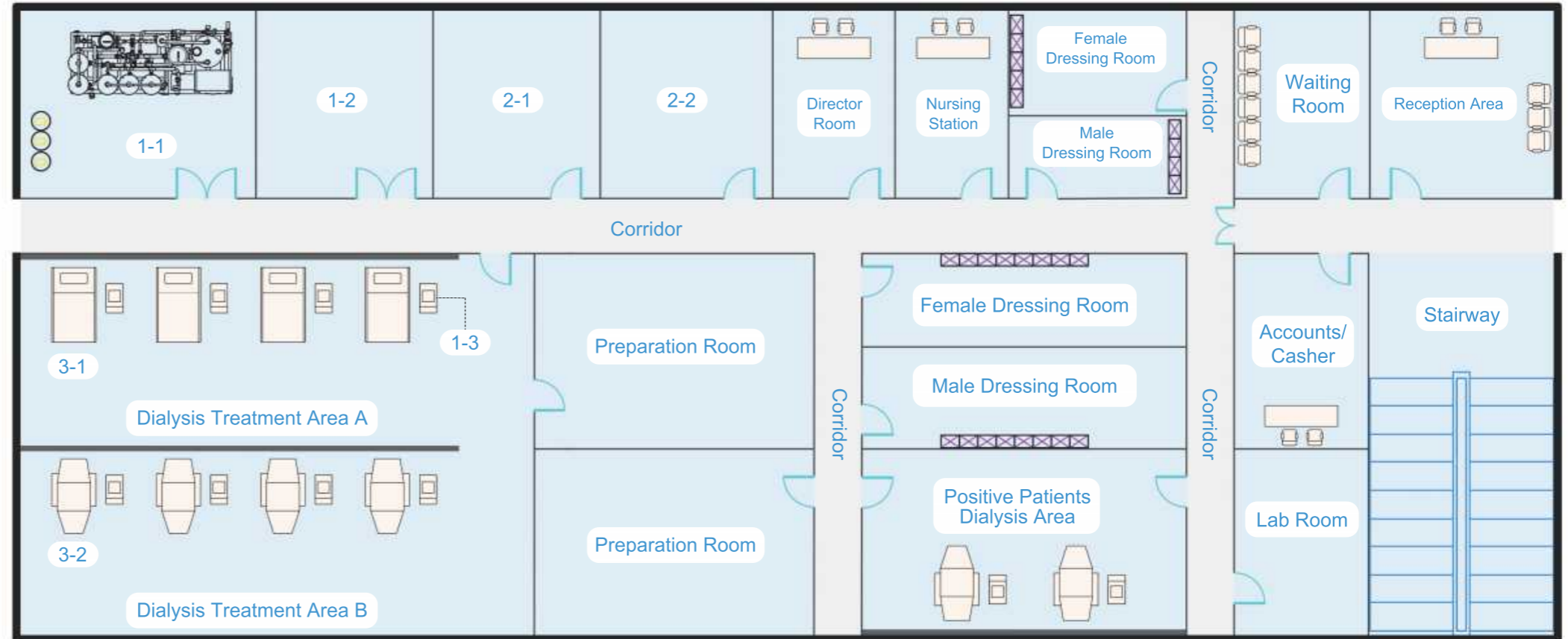
- 2-1. Wetted Consumable Room
 - 2-1-1. Hemodialysis Concentrate
 - 2-1-2. Disinfectants
- 2-2. Dry Consumable Room
 - 2-2-1. Hollow Fiber Dialyzer
 - 2-2-2. Hemodialysis Blood Circuits
 - 2-2-3. AVF/Dialysis Catheter Needle
 - 2-2-4. Accessories Tubing for HDF
 - 2-2-5. Hemodialysis Powders
 - 2-2-6. Dialysis Nursing Kits
 - 2-2-7. Dialysis Fluid Filter
 - 2-2-8. PTA High Pressure Balloon Dilatation Catheter

3. Dialysis Furniture

- 3-1. Dialysis Bed
- 3-2. Dialysis Chair
- 3-3. Medical Trolley

4. Other Consumables

- 4-1. Dialysis Test Strip
- 4-2. Dialysis Weighting Scale
- 4-3. Other Accessories/Necessities



Technical Data Hemodialysis Machine W-T2008-B

Technical Data:

General data:

Dimensions 1380 x 380 x 400 mm (H x W x D);
Weight approx. 66 KG;

Water supply:

Water inlet pressure 1.5-6.0 bar
Water inlet temperature 5°C -32°C
Max. drain height 1m

Concentrate supply

Supply pressure 0 to 2 m suction height

Electrical data

Power supply AC220V±10%, 47-63Hz
Current consumption max. 10A

Extracorporeal circuit

Arterial pressure monitoring

Display range -380 mmHg to +400 mmHg
Accuracy ±10 mmHg
Resolution 1 mmHg

Venous pressure monitoring

Display range -180 mmHg to +600 mmHg
Accuracy ±10 mmHg
Resolution 1 mmHg

Transmembrane pressure monitoring

Display range -180 mmHg to +600 mmHg
Accuracy ±20 mmHg
Resolution 1 mmHg

Arterial blood pump

Blood flow range 30 to 600ml/min in 8 mm bloodline systems
Accuracy ±10%

Air bubble pump

By ultrasound transmission, additional optical monitoring in venous clamp.

Heparin pump:

Delivery range 0ml/h to 10ml/h
Bolus function max. 20 mL per bolus
Syringe size 10, 20, 30, 50ml

Dialysis fluid circuit

Dialysis fluid flow range

Selectable 100-800 mL/min

Dialysis fluid temperature

Selectable 34.0°C to 40.0°C

Dialysis fluid conductivity

Range 12 to 16 mS/cm (25°C)
Accuracy ±0.1 mS/cm

Acid concentration dialysis fluid

Default mixing ratio 1+34 (others possible)
Range 125 to 150 mmol/L

Bicarbonate concentration dialysis fluid

Default mixing ratio 1+27.6 (others possible)
Range -8 to +8 mmol/L bicarbonate

Ultrafiltration

UF rate 0ml/h~4000ml/h
Accuracy ±1%
Allowed dialyzer UF factor unlimited
Parameter displayed UF goal, UF time, UF rate, UF volume

Blood leak detector

Sensitivity ≤0.35 mL blood/min (HCT=32)

KT/V

Calculation

Disinfection and cleaning programs

Rinse Temperature/flow 30 to 60°C / 300 to 800ml/min

Hot Rinse (recirculation)

Temperature/flow 30 to 85°C / 300 to 800ml/min

Hot disinfection with chemical

Temperature/flow 30 to 85°C / 300 to 800ml/min

Various program combination selectable

Technical Data-Options

Blood pressure Monitor (BPM)

Display range Systole: 40-280 mmHg
Diastole: 40-280 mmHg
Accuracy: 1 mmHg

Central Delivery system for acid conc.

Supply pressure 0 to 100 mbar;
1 m suction height with Central delivery system: 0-500 mbar

Endotoxin filter-- Dialysis fluid filter system

Balancing accuracy ±0.1% of dialysate flow

Bicarbonate dry

Concentrate Bi-cart SXG-F



Hemodialysis Machine
W-T2008-B

江西三鑫医疗科技股份有限公司

JIANGXI SANXIN MEDTEC CO.,LTD.

地址: 江西南昌小蓝经济技术开发区富山大道999号

Add: No.999 Fushan Road, Xiaolan Economic Development
Zone 330200 Nanchang, Jiangxi P.R. China

电话 (Tel): 86-791-85950275 Fax: 86-791-85988819

邮箱 (E-mail): sales@sanxin-med.com

网址 (Web): www.sanxin-med.com



Hemodialysis Machine

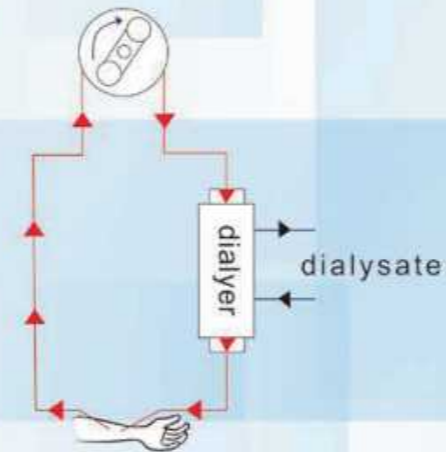


DIASAFE Plus ensures ultrapure dialysate.
 Decrease the danger of being infected by endotoxin.
 Automatic test
 Times of using can be recorded.
 Remind of changing

Kt/V

t-HD time
 Factors:
 Alarming
 Bypass
 Stop treatment in advance
v-body fluid
 Factors:
 Patients' height
 Weight
 Age
 Sex

K-Urea clearance
 Factors:
 EBFR
 Blood composition
 Anti-coagulation
 UF rate
 Recirculation (vascular access or CPR)
 Types of dialyzer
 Qd



Blood pressure monitor
 Automatic NIBP monitor
 Blood pressure diagram.
 Measuring time setting
 History record

Features:

- Intelligent Double Operation System
- LCD touch screen with button interface
- Emergency power 30Mins (Optional)
- Blood Pump&Spare Pump (for standby and also can be used for hemoperfusion).
- Heparin Pump
- Hydraulic compartment(Balance chamber + UF pump).
- Operation, Alarm information Memory function.
- A/B Ceramic proportion pump , High precision, Corrosion-proof, Accuracy.

Central Delivery System

Features:

- Nitrogen generator to inhibit bacterial growth effectively;
- Multiple safety protection: ion concentration monitoring, endotoxin filter to ensure dialysis safety;
- Filter: Filter the undissolved particles in the dialysate to achieve the hemodialysis requirement of the dialysate, effectively ensuring the quality of the concentrate.



Ro Water Purification System

Features:

- The first grade three reverse osmosis water treatment equipment in China;
- The water is more pure, the dialysis quality is higher, and the patient experience is more comfortable.



Dialyzer Reprocessing Machine



Automatic Mixing System

